

# ***XTV ACCESSORIES***

**MAGIC WITHOUT THE TRICKS**



Look around. This is what you call magical. When you have an amphibious ARGO XTV, you have the power to discover amazing places typically seen in coffee table books or through a drone viewfinder. Whether you're going on a weekend fishing or hunting trip, working overtime on a job site or escaping to clear out the cobwebs — the magic starts to happen in unexpected ways when people and machines are one with nature.



**HEAVY DUTY RUBBER TRACKS**

18" (457 mm) wide rubber track provides optimum flotation with minimal ground pressure. Exceptional traction. Lightweight durable construction and low rolling resistance ensures smooth, quiet operation in difficult terrain conditions. Available with or without axle extensions.



**TRACK ASSEMBLY 8x8  
18" RUBBER - NO EXTENSIONS**  
825-50-1-NE

**Application:** 8x8 models- 18" Rubber No Extensions (for offset rims) excludes Conquest

**TRACK ASSEMBLY 8x8  
18" RUBBER**  
825-50-1

**Application:** 8x8 Models - 18" Rubber

**RUBBER TRACK - PRE CUT**  
825-51-1

**Application:** Not accessory by itself, used in kit

**TRACK ASSEMBLY 8x8  
CONQUEST 18" RUBBER -  
25" ARGO TIRES**  
958-88-NE

**Application:** 2019-2024 Conquest

**RUBBER TRACK- CONQUEST**  
958-88

**Application:** Released in 2012 for XT vehicles

## TRACK PRODUCTS, ICE CLEATS, MUD FLAPS

XTV ACCESSORIES

ATV ACCESSORIES

SXS ACCESSORIES

GARMENTS

OIL &amp; CARE

**PLASTIC TRACKS**

General purpose, mud & snow, segmented plastic track ranging in width from 13" (330 mm) to 18" (457 mm). Segments are light weight, easily replaced and formed from thermoplastic rubber compound to withstand impact and reduce wear. Requires 22" or 24" Argo tires. Comes with axle and stud extenders.

**TRACK ASSEMBLY 6x6  
13" PLASTIC**  
615-43

**Application:** 6x6 models 13" Plastic (Requires 24" or 22" Argo Tires)

**TRACK ASSEMBLY 8x8  
13" PLASTIC**  
815-42K

**Application:** 8x8 models - 13" Plastic (Requires 24" or 22" Argo Tires) excludes Conquest

**TRACK ASSEMBLY 6x6  
18" SUPER TRACK**  
625-43

**Application:** 6x6 models- 18" Plastic (Requires 24" or 22" Argo Tires) Does not require the extensions to be installed on vehicles with offset rims

**TRACK ASSEMBLY 8x8  
18" SUPERTRACK**  
825-42K

**Application:** 8x8 models - 18" Plastic (Requires 24" or 22" Argo Tires) Does not require the axle extensions to be install on vehicles with offset rims excludes Conquest

**XTREME DUTY RUBBER TRACKS**

18" (457 mm) wide rubber track with guides, reinforced turf tire and rim provides optimum flotation with minimal ground pressure. Designed for use with Conquest models, this track offers quiet operation, superior wear and durability in difficult terrain.

**TRACK ASSEMBLY 8x8 CONQUEST  
18" RUBBER - INCLUDES 24"  
TURF TIRES**  
958-88HD

**Application:** 2019-2024 Conquest

**TRACK ASSEMBLY 8x8 CONQUEST  
18" RUBBER - REQUIRES 24"  
TURF TIRES**  
958-88HD -NT

**Application:** 2019-2024 Conquest

**RUBBER TRACK- CONQUEST**  
958-88

**Application:** Released in 2012 for XT vehicles



**ICE CLEAT KIT  
6x6 SUPERTRACK**  
625-20

**Application:** 6x6 models (Fits 18" Plastic Track Only - Supertrack)

**ICE CLEAT KIT  
8x8 SUPERTRACK**  
825-20

**Application:** 8x8 models except Conquest

**ICE CLEAT KIT  
8x8 RUBBER TRACK**  
825-21

**Application:** 8x8 models except Conquest (plastic segmented)

Steel cleats increase traction on ice and hard-packed snow. Available for all track configurations.



**CATWALK MUDFLAP ASSEMBLY**  
958-93

**Application:** 2013-2024 Conquest

6.25" (160 mm) steel platform runs the full length of the vehicle. Includes a 10" (255 mm) mud flap. Available for Conquest Series only.



**MUD FLAP ASSEMBLY**  
625-10

**Application:** 8x8 Models

Deflects snow and mud. Stay dry and clean when navigating through challenging terrain. Easy to install.



TOPS AND ENCLOSURES

XTV ACCESSORIES

ATV ACCESSORIES

SxS ACCESSORIES

GARMENTS

OIL & CARE



**CONVERTIBLE TOP 8x8 - BLACK**

849-40 **Application:** 2019 and prior Avenger 8x8

849-51 **Application:** 2019 and prior Frontier 8x8

900-0005 **Application:** 2022-2020 Aurora and Frontier 8x8 (2019 Aurora Model only) Requires 900-0062 windshield (2023 Model)

Protects all occupants or cargo from outdoor elements. Converts from a full enclosure to bimini top by removing all sides. When not in use, the top is easily removed or folded down and protected with the included boot cover. Requires fold-down windshield.



**CONVERTIBLE TOP - 4 PERSON  
REQUIRES 958-192 FOLD DOWN WINDSHIELD**

958-171

**Application:** 2019-2024 4 Person (Requires: 958-192 Fold Down Windshield) Conquest 2017-2023

Protects all occupants or cargo from outdoor elements. Converts from a full enclosure to bimini top by removing all sides. When not in use, the top is easily removed or folded down and protected with the included boot cover. Requires fold-down windshield.



**SOFT CAB with DOOR LATCHES**

900-0576

**Application:** 2020-2024 Aurora and Frontier 8x8 without ROPS

Protects all occupants or cargo from mother nature's elements and is constructed using clear vinyl to enhance operator and passenger field of view. Not compatible with bedliner (900-0075).



**2 PERSON ENCLOSURE CANVAS - XT  
MODELS**

958-205

**Application:** 2019-2024 (Will not work with Suspension Seats Requires 956-15 ROPS, 958-90 Windshield, 958-102 Hard Top)

Protects driver, passenger and cargo from outdoor elements. Features removable sides and doors, allowing easy access to the rear cargo compartment area. Requires 958-90 fixed windshield, ROPS and hard top.


**SOFT ENCLOSURE REQUIRES ROPS**

900-0119

**Application:** 2020-2024 Frontier & Aurora 8x8 requires ROPS 900-0040 & Windshield 900-0111

Designed to accommodate the roll-over protective structure (ROPS), the soft cab protects all occupants and cargo from mother nature's elements and is constructed using clear vinyl to enhance operator and passenger field of view.


**FULL FABRIC CAB - 6x6**

900-0326

**Application:** 2020-2024 Frontier 6x6 requires 900-0062 Windshield

Protects all occupants and cargo from mother nature's elements and converts from a full enclosure to bi-mini top by removing all sides. When not in use, or when vehicle is being trailered, the top is easily removed or folded down and protected with the included boot cover.


**HARD TOP ROOF - 8x8**

900-0088

**Application:** 2020-2024 Aurora 8x8 \*\*\*Requires ROPS\*\*\*

Vacuum formed hard top that provides protection for your crew and equipment from sun, rain, snow and other elements. Designed to work in tandem with roll-over protective structure (ROPS).


**HARD TOP - 2 PERSON REQUIRES 956-15 ROPS**

958-102

**Application:** 2013-2024 Conquest requires 956-15 2 Person ROPS

**HARD TOP - 4 PERSON REQUIRES 956-15 ROPS, 956-16 ROPS, 958-102 HARD TOP**

958-104

**Application:** 2013-2024 Conquest requires 956-15 2 Person ROPS to make a 4 person ROPS and 958-102 Hard Top

Vacuum formed hard top that provides additional protection to your crew and equipment from sun, rain or snow. Requires ROPS.

ROPS ASSEMBLIES



**2 PERSON ROPS**  
956-15

**Application:** 2013-2024  
Conquest 2 Person ROPS

Driver and front passenger Roll Over Protection Structure complete with seat belts, certified to ISO 5700. Also available in an extended vehicle configuration, up to 4 people when rear bench seat is installed.



**ROPS ASSEMBLY**  
900-0040

**Application:** 2020-2024 Aurora



**4 PERSON ROPS ASSEMBLY  
(REQUIRES 956-15 ROPS)**  
956-16

**Application:** 2013 to Current Conquest requires 956-15 2 Person ROPS to make a 4 person ROPS

Roll-over protective structure (ROPS) complete with four seat belts for driver and passengers. Noncollapsible and rigid construction provides optimal coverage and protection across diversified applications.



**2 PERSON ROPS ASSEMBLY  
WITH 2 SEAT BELTS**  
849-90-2

**Application:** 2019 and prior Avenger and Frontier 8x8

Full vehicle roll over protection complete with two seat belts for driver and passenger. Available for all models with options for seat belts and rear bench (8x8 Models only). Cannot be combined with light bar, suspension seats or standard brushguard.





**FOLDING WINDSHIELD**  
900-0039

**Application:** 2019 Aurora Models



**FOLDING WINDSHIELD**  
900-0062

**Application:** 2020-2024 Models  
excluding Conquest



**FOLDING WINDSHIELD**  
958-192

**Application:** 2019- 2024 Conquest  
Models

Scratch-resistant acrylic in an aluminum frame, features fold over hinge for storage and a mounting location for the optional windshield wiper accessory.



**WINDSHIELD - FRONTIER**  
648-79

**Application:** 2019 and prior Frontier



**WINDSHIELD - AVENGER**  
848-171

**Application:** 2019 and prior Avenger



**WINDSHIELD ROPS REQUIRED**  
958-90

**Application:** 2013- 2024 Conquest  
Models

Scratch-resistant acrylic in an aluminum frame, features fold over hinge for storage and a mounting location for the optional windshield wiper accessory.

Engineered to fit with installed ROPS, the fixed lexan built windshield provides maximum coverage and protection from dirt, dust and other airborne debris. Requires 956-15 ROPS



## WINDSHIELD PRODUCTS

XTV ACCESSORIES

ATV ACCESSORIES

SxS ACCESSORIES

GARMENTS

OIL & CARE



**WINDSHIELD ROPS REQUIRED**  
900-0111

**Application:** 2020-2024 Frontier and Aurora Models

Engineered to fit Frontier and Aurora models with installed ROPS, the fixed lexan built windshield provides maximum coverage and protection from dirt, dust and other airborne debris.

Requires rops 900-0040



**WINDSHIELD WIPER ACCESSORY**  
648-91

**Application:** 2019 and prior Avenger and Frontier

Keep your windshield clear of dirt, mud, snow, dust and other off-road debris. Operated via the dash mounted on/off rocker switch, the electronic wiper pulls fluid from the underhood reservoir to keep your field of vision clear and spotfree.



**WINDSHIELD WIPER KIT**  
900-0049

**Application:** 2019 Model Aurora only - Requires 900-0039 windshield . 2020 => Models - Requires 900-0062 windshield \*\*\* excludes Conquest



**WINDSHIELD WIPER KIT**  
900-0105

**Application:** 2021-2024 Conquest  
\*mounts on left side of windshield

Complete with everything needed to assemble and fit to your ARGO windshield. Wiper motor mounts quickly and easily.

**WINDSHIELD WIPER WASHER - XT**  
958-130

**Application:** 2017-2020 Conquest  
\*mounts on right side of windshield



**BRUSHGUARD FITS WITH ROPS**  
642-80

**Application:** 2019 and prior Avenger 8x8 with ROPS

Heavy-duty tubular commercial brushguard engineered to work in tandem with the roll-over protective structure (ROPS) and commercial 4,500lb. or standard 3,500lb. winch. Durable and offering rugged protection, this brushguard is built to hold up against the toughest of tasks.



**BRUSHGUARD**  
900-0036

**Application:** 2020-2024 Aurora and Frontier

Updated and conformed to the entirety of the XTV recreation lineup, the Brushguard offers a sleek design that incorporates a position for your front mounted winch while offering rugged protection from trees, brush and other debris that may compromise the integrity of your XTV.



**BRUSHGUARD - AVENGER/HDI**  
642-49

**Application:** 2019 and prior Avenger 8x8

**BRUSHGUARD - FRONTIER**  
642-50

**Application:** 2019 and prior Frontier 8x8, 6x6

Stylish and functional; body, lights and winch are protected from brush. Offers a mounting location for extra fog lights. Use part# 642-80 if equipped with ROPS.



## WINCH PRODUCTS

XTV ACCESSORIES

ATV ACCESSORIES

SxS ACCESSORIES

GARMENTS

OIL &amp; CARE

**WARN VRX 25 WINCH KITS**

900-0047

**Application:** 2020-2024 Frontier

Complete front mount winch kit attaches to and provides reliable pulling power. Kit includes mount plate, switch, wiring harness, solenoid, Warn VRX25, roller fairlead, and hardware for a straightforward installation. The winch includes 50' of 7/32 steel rope and roller fairlead.

**WARN VRX 35 WINCH KITS**

900-0046

**Application:** 2020-2024 Aurora (excludes 800 models)

900-0229

**Application:** 2020-2024 Aurora 800 models only

Complete front mount winch kit attaches to and provides reliable pulling power. Kit includes mount plate, switch, wiring harness, solenoid, Warn VRX35, roller fairlead, and hardware for a straightforward installation. The winch includes 50' of 7/32 steel rope and roller fairlead.

**WARN VRX 35 S WINCH KITS**

900-0048

**Application:** 2020-2024 Aurora (excludes 800 models)

Complete front mount winch kit attaches to and provides reliable pulling power. Kit includes mount plate, switch, wiring harness, solenoid, Warn VRX35 S, roller fairlead, and hardware for a straight forward installation. The winch includes 50' of 7/32 synthetic rope and Hawse fairlead.

**WARN VRX 45 S WINCH KITS**

900-0113

**Application:** 2020-2024 Conquest (excludes 800 models)

900-0228

**Application:** 2020-2024 Conquest (800 models only)

Complete front mount winch kit attaches to and provides reliable pulling power. Kit includes mount plate, switch, wiring harness, solenoid, Warn VRX45 S, roller fairlead, and hardware for a straightforward installation. The winch includes 50' of 1/4 synthetic rope and Hawse fairlead.



**REAR RECEIVER WINCH MOUNT** 900-0094

**Application:** 2020-2024 Aurora and Frontier

Maximize your winching capabilities by installing a secondary winch receiver on the rear of your XTV. Integrated into the existing 2" receiver, the rear mounted winch can be simply installed or removed with 2 release pins and clips.

Includes: Rear Receiver Winch Mount and Rear Wiring.

Excludes: 5/8" x 3.5" long hitch pin and retaining clip required to secure mount to the rear receiver.

Compatible with only Argo Warn Winch kits 900-0046, 900-0047, 900-0048, 900-0113, 900-0228, 900-0229 which have the removable winch mount plates 622-111 (Aurora/Frontier) or 622-130 (Conquest).



**REAR RECEIVER WINCH MOUNT** 622-96

**Application:** 2019 and prior Avenger (Released 2004)

Winch bracket required when mounting a winch on the rear of your XTV.



**SNOW PLOW KIT** 900-0386

**Application:** Aurora, Frontier, HDi, Avenger Models

81" (2 m) wide steel blade features multi-angle positions. Compatible with bearing extension or non-bearing extension models. A snowplow will maximize the utilization of your ARGO when the snow flies. Requires power winch for raise and lower operation



RACKS AND HANDLES, STEPS, OUTBOARD MOTOR

XTV ACCESSORIES

ATV ACCESSORIES

SXS ACCESSORIES

GARMENTS

OIL & CARE



**HOOD RACK - HDI**  
848-273

**Application:** 2019 and prior Avenger and Frontier

Provides extra stowage for packs and gear for long hunting trips, or it can serve as a convenient space for bringing home smaller game.



**HOOD RACK ACCESSORY**  
900-0073

**Application:** 2020-2024 Aurora and Frontier



**REAR RACK ACCESSORY**  
900-0074

**Application:** 2020- 2024 Frontier 6x6

Rear cargo rack designed to carry additional equipment and gear optimal for extended trips/ excursions.



**HANDRAIL - AVENGER**  
839-30

**Application:** 2004-2019 Avenger



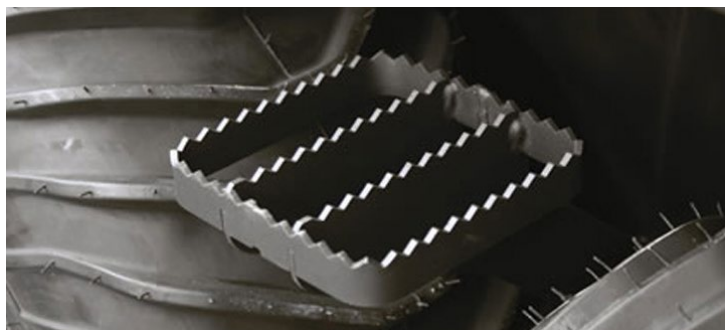
**HANDRAILS - 8X8 MODELS**  
900-0065

**Application:** All 8x8 Models  
(Not for use with 900-0075 Cargo Liner)



**SIDE GRAB HANDLE - 6X6**  
900-0148

**Application:** 2020- 2024 Frontier 6x6



**ENTRY STEP**  
848-240 - Frontier

**Application:** 2022 and prior Frontier; 8x8 or 6x6 with 24" tires

**ENTRY STEP**  
848-173 - All 8x8 Models

**Application:** 2020-2024 Aurora; 2019 and prior Avenger Non-tracked 8x8 with 24-25" tires and 8x8 w/track and 25" tire



**OUTBOARD MOTOR BRACKET  
RIGHT SIDE MOUNT**  
617-09

**Application:** 2019 and prior 6x6 models right side mount

This one-piece bracket mounts to the bumper and rear receiver hitch bracket. Mounting location is slightly off-center and accepts an outboard motor of up to 9.9 HP for increased propulsion in water. Not compatible with 868-01 Tire Carrier.

**OUTBOARD MOTOR BRACKET  
RIGHT SIDE MOUNT**  
617-10

**Application:** 2020 - 2022 models and 2019 and prior 8x8 models



**CARGO TIE DOWN**  
614-06

Vehicle tie down points that are installed around the rear cargo space of 6x6 and 8x8 XTVs.



**GAS CAN CARRIER**  
867-01

**Application:** Aurora, Frontier, Avenger

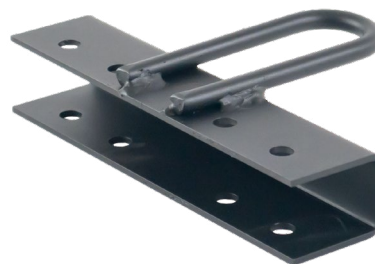
Keep your additional fuel safely removed from the cargo area and away from on board possessions. Allowing you to transport extra fuel free of any on board spilling hazards, the gas can carrier is the safe alternative when transporting gasoline.



**SPARE TIRE CARRIER**  
868-01

**Application:** Aurora, Frontier, Avenger

Be prepared for the unexpected with the addition of the spare tire rack. Accommodating the ARGO 8"/9" rims and 24"/25" tires, the spare tire rack is the right fit for any of our XTVs.



**TOW HOOK ASSEMBLY**  
642-00

**Application:** All Models

Simplicity and Versatility. A split rim mount allows winch cables or towing straps to be attached to your XTV to assist with moving heavy loads.





## HEATER KITS

**HEATER ACCESSORY  
CONQUEST 800**  
900-0225

**Application:** 2020-2024 Conquest 800, Liquid-cooled engines only (Kawasaki)

**HEATER KIT - AVENGER**  
848-170

**Application:** 2019 and prior Avenger

**HEATER KIT - AURORA 800**  
900-0305

**Application:** 2020-2021 Aurora 800

**HEATER KIT - CONQUEST XTI**  
958-129

**Application:** 2019 and prior Conquest (Requires Kohler liquid-cooled engines)

Brave the elements from the comfort of a heated cab with the installation of the heater/defroster kit. Integrated into liquid cooled specific models, the heater core utilizes the antifreeze of the engine to push warm air into the cab.



## HOOD FANS

### **HOOD FAN** 10754C

**Application:** 2019 Aurora 800 models only

### **HOOD FAN - AURORA/FRONTIER** 900-0194

**Application:** 2020-2024 Aurora and Frontier models

### **HOOD FAN - CONQUEST** 900-0104

**Application:** 2021-2024 Conquest models

### **HOOD FAN - AVENGER** 602-71

**Application:** 2019 and prior Avenger models

### **HOOD FAN - FRONTIER** 602-75

**Application:** 2019 and prior Frontier models

Maximize engine compartment airflow while pulling excess heat away from the engine, transmission, brakes and other underhood components. Optimal when operating in mud, deep snow and other slow moving applications with minimal airflow, the hood fan simply mounts under the hood of your XTV and helps to ensure operating temps remain within the allocated range to maximize performance.



## SEATS AND BEDLINERS

XTV ACCESSORIES

ATV ACCESSORIES

SxS ACCESSORIES

GARMENTS

OIL & CARE



### **REAR BENCH SEAT AVENGER** 849-80

**Application:** 2019 and prior Avenger and Frontier 8x8

### **REAR BENCH SEAT AURORA/FRONTIER** 900-0093

**Application:** 2020-2022 Aurora and Frontier 8x8

### **REAR BENCH SEAT AURORA/FRONTIER** 900-0403

**Application:** 2024 Aurora and Frontier 8x8

Frame mounted, forward facing rear bench seat provides additional seating for up to 2 passengers. Featuring quick release mounts, this seat can be easily removed or installed to customize your cargo area layout.



### **REAR BENCH SEAT CONQUEST** 958-70

**Application:** 2019-2024 Conquest

Frame mounted, forward facing rear bench seat provides additional seating for 2 passengers. The bench seat can be removed quickly, without tools, to gain unrestricted access to the rear cargo area.



### **BED LINER - 8X8 AURORA AND FRONTIER** 900-0075

**Application:** 2020-2024 Aurora and Frontier 8x8 Models

One-piece polyethylene bed-liner insert offering added protection and storage for versatile applications. Equipped with body mounted straps and tie down points, the bedliner and your gear remain tightly secured while navigating the roughest terrain. Not compatible with 4-door soft cab (900-0576).



### **BED LINER - 8X8 AVENGER AND FRONTIER** 866-01

**Application:** 2019 and prior Avenger and Frontier 8x8 Models

Engineered to fit over existing rear passenger seats, this bedliner offers a quick and efficient option to keep your cargo area clear of debris, mud and unwanted fluids

**COVER 6X6 - TRAILERABLE**

6x6 Models - 900-0335

8x8 Models - 900-0120

**Application:** Frontier 6x6 models and Frontier 8x8 and Aurora 8x8 models

From trailering your XTV down the road to storing it for the season, this trailering cover offers versatility and protection all in one package. This cover is secured to the machine with a unique ratcheting system.

**STORAGE COVER 8X8 - TRAILER**

10636C

**Application:** 8 wheel trailer cover, not to be used while towing.

Crafted to fit the 8x8 trailer, this cover provides an added layer of protection from the elements.\*Disclaimer: This cover is to be used for storage purposes only and should not be used while towing or being trailered.

**STORAGE COVER - 6X6**

6x6 Models - 621-21

8x8 Models - 821-40

**Application:** 6x6 storage cover not for highway use

Protects your investment from the elements when not in use. Long term or short term this cover will help preserve the interior of your XTV.



LIGHTING AND ELECTRICAL



**TAILLIGHT/BRAKELIGHT KIT**  
900-0107

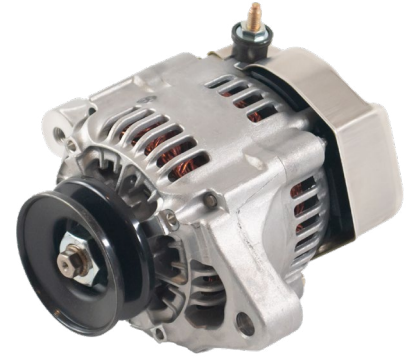
**Application:** 2020-2024 Conquest

Allow other riders and operators to see you clearly during all hours of operation with the accessory brake light kit. Illuminated when the headlights are on and signals drivers behind you when brakes are applied.



**BRAKELIGHT KIT - RECTANGULAR**  
624-10

**Application:** 2019 and prior Avenger, Frontier and Conquest



**ALTERNATOR - AVENGER**  
850-54

**Application:** 2019 and prior Avenger

Upgrade the charging system output of your XTV from 20 amps to 40 amps with the accessory alternator. Equipped with the alternator, your XTV will consistently be charging your battery while putting out 40 amps alleviating the chance of a dead battery while providing enough power for all your customized accessories.



**BATTERY SHUT OFF SWITCH**  
850-242

**Application:** 2018 and prior Avenger and Frontier 8x8

Alleviate phantom loads and customized accessories from draining your battery when the machine is not in use with the battery shutoff switch. Mounted under the operator seat, this switch is simply used to shutoff power directly to the battery.



**KEY - RH CUT BLANK**  
900-0429

**Application:** 2019-2024 Aurora, Frontier, Conquest

Blank and ready to be cut to the size of your existing ignition key, this key blank can be taken to any locksmith or automated keycutting machine to act as an additional spare key.



**KEY - LH CUT BLANK**  
900-0282

**Application:** 2019-2024 Aurora, Frontier, Conquest

Blank and ready to be cut to the size of your existing ignition key, this key blank can be taken to any locksmith or automated keycutting machine to act as an additional spare key.



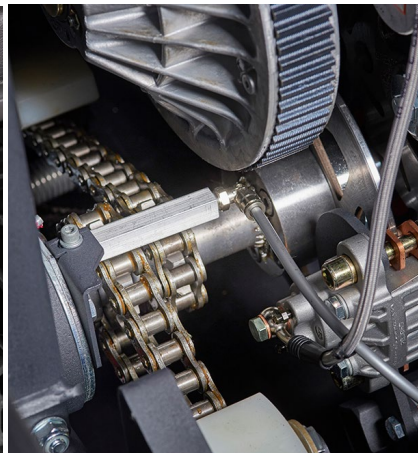
**BILGE PUMP**  
638-40

**Application:** 2020-2024 Frontier and Aurora models

A critical safety component for amphibious and open water operation, the on board bilge pump is situated at the frontal base of the hull and manually operated via the dash mounted rocker switch to expel unwanted water gathered in the hull of the XTV.

**BILGE PUMP**  
638-25

**Application:** 2020-2024 Conquest models



**CHAIN LUBE SYSTEM**  
900-0112

**Application:** 2020-2024 Aurora and Frontier

Simplifying routine maintenance, the momentary chain lubrication disperses oil onto your machine's chain driven system when pressing the momentary rocker switch to the ON position. This process alleviates the need to manually lubricate your chains at the scheduled intervals



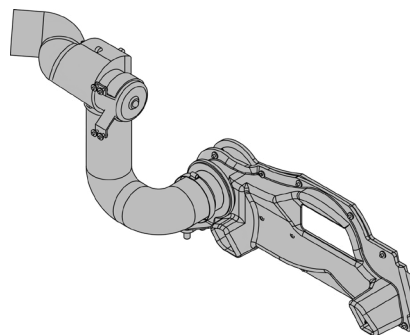
**BRAKE COOLING KIT**  
900-0137

**Application:** 2019 Aurora Models



**BRAKE COOLING KIT**  
900-0063

**Application:** 2020-2024 Frontier Models



**BRAKE COOLING KIT**  
900-0333

**Application:** 2020-2024 Aurora

**BRAKE COOLING KIT**  
958-157

**Application:** 2019 - 2020 Conquest Models

Alleviate unwanted wear of your hydraulic steering brakes and transmission due to elevated operating temperatures with the underhood brake cooling kit. Utilizing external airflow, the blower fan redirects fresh air to cool the brakes, transmission and other underhood components.



## TRAILERS

XTV ACCESSORIES

ATV ACCESSORIES

SxS ACCESSORIES

GARMENTS

OIL & CARE

### 8 WHEEL TRAILER

**Application:** Aurora, Frontier, Avenger

Maximize your amphibious load carrying capacity by up to 1,300lb. with the black 8 wheel trailer. Engineered using an 8-wheel lower body with ARGO axles and wheels, the trailer comes standard with 25"(635mm) tires. Load up with all of your power tools, equipment or outdoor gear, you'll have plenty of room to haul your precious cargo no matter the destination or terrain. Available for all ARGO models.



### 4 WHEEL TRAILER

**Application:** Aurora, Frontier, Avenger

Enhance your amphibious load carrying capacity by up to 600 lb. (275 kg) with the black 4 wheel trailer. Engineered using a 6-wheel lower body with ARGO axles and wheels, the trailer comes complete with 24" (610 mm) or 25" (635 mm) tires. Available for all models.

